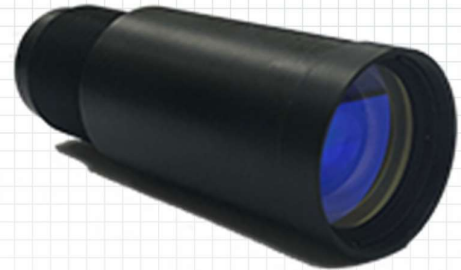


VIS+SWIR A-thermal mono-focal – commercial off the shelf lens

# RP-125A12

VIS + SWIR 12.5mm F/1.2 A-thermal mono focal lens  
for 9.6 x 7.68mm detectors



## FEATURES / APPLICATIONS / CAPABILITIES

- Very wide spectral band A-thermal design for **100°C** span
- True high performance A-thermal lens for VIS + SWIR detectors

PARAMETER		VALUE	NOTES
Main	Sub		

🔍 OPTICAL			
<b>Focal Length / F#</b>		12.5mm F/1.2	A-thermal lens. Nominal Values
<b>Working spectral band</b>		0.6 - 1.7 $\mu$	
<b>Detector (FPA) type / size</b>		9.6 x 7.68 mm	12 $\mu$ , 15 $\mu$ or 20 $\mu$ pitch
<b>Optical configuration</b>		Single focus A-thermal lens	
<b>FOV (degrees)</b>		45° (H) x 35.5° (V)	
<b>Average transmission: &gt; 75%</b>			
<b>Optical Back Focal Length</b>		6mm	
<b>Mech. Back Working Distance</b>		4.5mm	
⚙️ MECHANICAL			
<b>Focus mechanism</b>		NA	A-thermal lens.
<b>Total Weight</b>		120 grams	
<b>Structure</b>		Open frame, Front element sealed to front element flange.	
<b>External Dimensions</b>		30mm diameter x 81mm Length	
🌐 ENVIRONMENTAL			
<b>Operating Temperature</b>		-40°C to +60°C	A-thermalized for <b>100°C</b> temperature span.
<b>Storage Temperature</b>		-40°C to +70°C	
<b>Shock and Vibrations</b>		Per applicable standard	
<b>Front lens sealing</b>		IP67	By request

