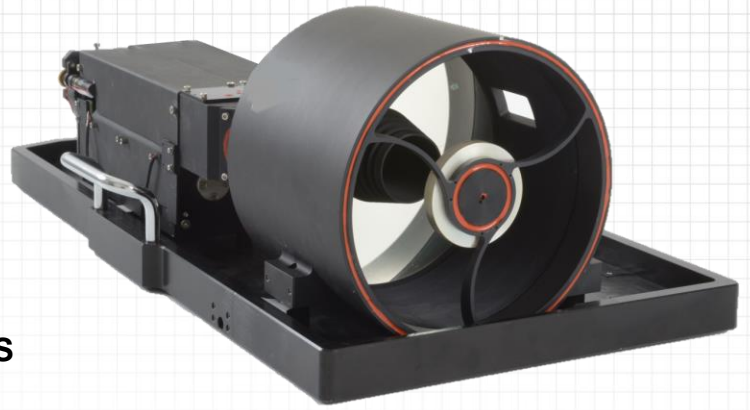


VIS-SWIR continuous zoom – commercial off the shelf lens

# AMARYLLIS

**SWIR** 500 – 2500mm Continuous zoom  
**VISIBLE** 400 / 1620mm Dual FOV  
 Compact Dual Band VIS/SWIR  
 Ultra Long distance zoom lens



## FEATURES / APPLICATIONS / CAPABILITIES

- Zoom ratio: X4 in VIS, X5 in SWIR
- True high performance zoom lens built as 1 unit using both VIS and SWIR detectors
- Offered as: SWIR ONLY, VIS ONLY or VIS-SWIR full configuration.

PARAMETER		VALUE	NOTES
Main	Sub		
<b>OPTICAL</b>			
<b>Focal Length / F#</b>		Discrete 400/1620mm	Continuous 500-2500mm F/4-16
<b>Working spectral band</b>		0.4 – 0.9 $\mu$	0.9 – 1.7 $\mu$
<b>Detector (FPA) type / size</b>		7.0 x 5.34 mm (7.4 $\mu$ pixel)	9.6 x 7.68mm (15 $\mu$ pixel) Consult RP for other detectors compatibility
<b>FOV (degrees)</b>		Narrow: 0.25° x 0.19° Wide: 1° x 0.75°	Narrow: 0.22° x 0.17° Wide: 1.1° x 0.88°
<b>Optical Average transmission</b>		>67%	>60%
<b>Optical Back Focal Length</b>		> 20 mm	> 20 mm Nominal, to FPA
<b>Optical filters</b>		Up to 5 filters: default is 2 filters	Up to 5 filters: default is 4 filters Motorized – controlled via lens board and SW
<b>MECHANICAL</b>			
<b>Mechanical Back Focal Length</b>		17.5	17.5 C-Mount
<b>Focus / Zoom mechanism</b>		Motorized	Motorized
<b>LOS shift during Zooming</b>		< 0.35mRad	< 0.35mRad Typical value
<b>Focus / Zoom pos. indication</b>		Included	Included Through motor & opto-switch encoders
<b>Total Weight</b>		8.5Kg (for VIS-SWIR full configuration) Nominal	
<b>Structure</b>		Open frame, Cassegrain	
<b>External Dimensions</b>		186mm $\varnothing$ x 559 mm Length	
<b>ELECTRICAL</b>			
<b>Power Input</b>		12VDC, 1.0A	Nominal
<b>Communication Protocol</b>		RS-422/232 Full Duplex	Baud rate 19,200, n, 8, 1
<b>ENVIRONMENTAL</b>			
<b>Operating/ Storage Temperature</b>		-20°C to +50°C	-30°C to +70°C
<b>Shock and Vibrations</b>		Per applicable standard	

