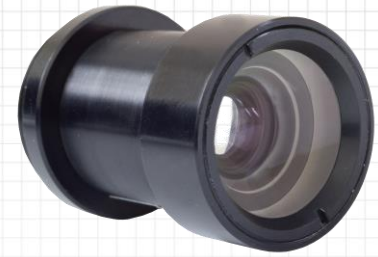


...VIS+SWIR A-thermal mono-focal – commercial off the shelf lens

RP-14A175

VIS + SWIR 14mm F/1.75 A-thermal mono focal lens
for 9.6 x 7.68mm detectors



FEATURES / APPLICATIONS / CAPABILITIES

- Very wide spectral band A-thermal design for **100°C** span
- True high performance A-thermal lens for VIS + SWIR detectors

PARAMETER		VALUE	NOTES
Main	Sub		
OPTICAL			
Focal Length / F#		14mm F/1.75	A-thermal lens. Nominal Values
Working spectral band		0.42 - 1.7 μ	
Detector (FPA) type / size		9.6 x 7.68 mm	12 μ , 15 μ or 20 μ pitch
Optical configuration		5G / 8E	
FOV (degrees)		39.9°(H) x 31.8° (V)	
Average transmission: > 86%			
Optical Back Focal Length		9.3 mm	
Mech. Back Working Distance		7.7 mm	
MECHANICAL			
Mechanical Back Focal Length		12.5 / 17.526 mm	CS / C Mount standard
Focus mechanism		NA	A-thermal lens.
Total Weight		49 grams	
Structure		Open frame, Front element sealed to front element flange.	
External Dimensions		28mm diameter x 46 mm Length	
ENVIRONMENTAL			
Operating Temperature		-40°C to +60°C	A-thermalized for 100°C temperature span.
Storage Temperature		-40°C to +70°C	
Shock and Vibrations		Per applicable standard	