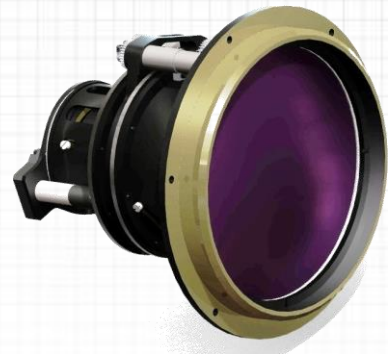


LWIR Continuous zoom – commercial off the shelf lens

AGATE

**Cooled LWIR 50 – 380 mm Continuous zoom
Lens with DSP controller**



FEATURES / APPLICATIONS / CAPABILITIES

- Suitable for various applications
- High sensitivity (LOW F#) as low as 2.5
- Rugged design for harsh environments

PARAMETER		VALUE	NOTES
Main	Sub		
OPTICAL			
Focal Length / F#		50 - 380 mm F/2.5	Nominal values.
Detector (FPA) type / size		640 x 480 pixels x 25 microns	Cooled detector with cols shield position at 22.4mm nominal.
Optical Spectral Range		7.5 – 9 microns	
FOV (degrees)		Wide FOV: 18 °(H) x 13.6° (V) Narrow FOV: 2.4° (H) x 1.8° (V)	For detector size of 640 x 480 x 25 microns
Optical Coatings			
	All internal surfaces	High efficiency AR coating	More than 90% transmittance
	Front surface	High durability AR coating	DLC is available upon request
Optical Total lens track		170 mm	Front element vertex to FPA
MECHANICAL			
Mechanical Back Focal Length		N/A	Detector gets inside the lens housing
Zoom mechanism/ Focus		Motorized	
Total Weight		Approx 2 kg	Nominal
External Dimensions		160 mm diameter x 144 mm length	
ELECTRICAL			
Power Input		12VDC, 0.5 A	Nominal
Communication Protocol		RS-422/232 Full Duplex	Baud rate 19,200, n, 8, 1
ENVIRONMENTAL			
Operating/Storage Temperature		-20°C to +50°C / -30°C to +60°C	
Shock and Vibrations		Per applicable standard	